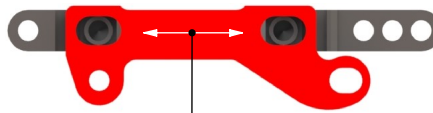


NEW CASTER ADJUSTMENT

PREVIOUS SYSTEM

Move back/forth

Fixed



Adjustable

With a new caster adjustment system, the upper arm bracket can be moved back and forth, which is easier to adjust and prevents binding of the upper arm when making caster adjustments. Additionally, it gives a wider range of caster values.

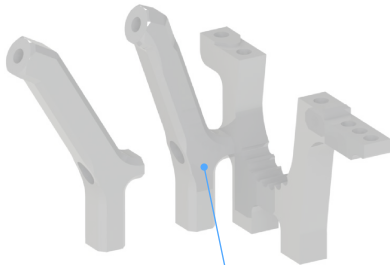
Gauge

optional ①



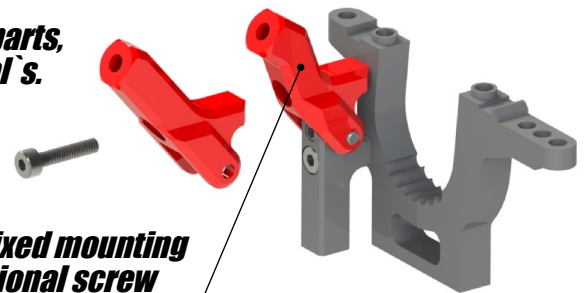
① B0558 is an optional tool recommended to use for bulkhead alignment, chassis tweak and caster value - all in one tool

PREVIOUS SYSTEM



Fixed standard/ optional active (A2542/A2543)

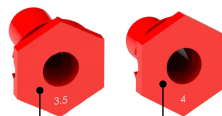
The new shock towers are lower, providing a flatter damper position. Active or fixed mounting can be chosen with the same parts, reducing the need for optional's.



Active or fixed mounting by additional screw (front & rear)

SHOCK TOWERS included

PREVIOUS SYSTEM



3.5mm HEX optional (A2246-35)

4mm HEX included

NEW DRIVE SHAFT'S included

New drive shafts with ball bearings for reduced friction, reduced vibration and maximum reliability. New black wheel hexes provide a 100% straight mounting area.

